



Rx Fly Fishing!

Volume XXXVIII

Number VIII

October 2014

Jerry Neuburger, Editor

Stockton, California

In this Issue

Page 2—[Bridgeport, the jewel in the crown of DFF's outings](#)

Page 3—[Conservation: The drought and a potential fish kill](#)

Page 6—[Lower Sac update from 9/24-25/14](#)

Page 6—[DFF October Outing: A drift down the Lower Sac](#)

Page 7—[Just another day on the delta](#)

Page 7—[Mokelumne clean-up report](#)

Page 8—[Eastern Sierra Focus](#)

Steve steps in again with Potluck and Swap meet guidelines

We are less than a week away from our annual potluck. This year the board has decided to include a swap meet and silent auction. Raffle chair, John Highsmith, says he will set aside tables at the back of the auditorium for those wanting to participate in the swap meet. The swaps, sales, or give-a-ways will begin at 6:30, with dinner being served at 7:00; the swap meet will resume after dinner. The silent auction will be the last order of business for the night. Should be a fun evening!

The swap meet is a great opportunity to clear out your closet, shed, or garage. This is your chance to

pick up a bargain or make some cash on on unused equipment. Al Smatsky will be bringing rods, reels, fly lines, shooting heads and tons of steelhead flies---all priced to go. Come early so you don't miss out on the best deals!!

For the potluck, all asked to bring something to share:

A-C salads,

D-G bread and butter,

H-K main dishes,

L-N cold drinks,

O-R hot or cold veggies,

S-Z desserts

Membership Update

By Bob Fujimura

Many thanks to those members who have renewed their 2015 memberships. About 60% of our membership has paid their 2015 dues which is notable for this early in the new membership year. One of our members also paid their current and their 2016 dues in advance which is a great convenience to themselves

and our officers. We also appreciate Jean Laughlin who renewed her late husband's membership in her name. Prompt renewal allows the club's officers to set the 2015 budget that influences what activities (e.g. paid program speakers) or donations (e.g. conservation grants or affiliations) will occur since

(Continued on page 2)

Calendar

October 8—DFF membership meeting

October 15—DFF Board Meeting

October 17-19 Lower Sac Outing

November 12—General Membership Meeting

November 15—Trout Bout

November 19— DFF Board Meeting

November 22—Lake Berryessa outing



(Continued from page 1)

membership dues make up an increasing proportion of the club's annual income. Annual costs for conducting its annual activities such as the annual dinners, BBQs, public partnerships (e.g. fishing bouts), and other usual committee costs have increased with time. At the same time, past income sources such as merchant and private donations and club fundraisers like raffles have decreased. Late membership payments or non-renewals also cause uncertainty when the club's officers need to make decisions on upcoming club activities such as the annual dinner or how much funds will be available for the committees. If you haven't paid your 2015 membership due yet, please take sometime soon to mail your dues to:

Membership Chair Bob Fujimura,
P.O. Box 1562
Lodi, CA 95241-1562.

Your check should be made payable to "Delta Fly Fishers, Inc."

We would like to acknowledge and welcome our newest member Bill Hogan of Manteca. Please introduce yourselves to Bill when he joins us at our upcoming events. Our club officers have been discussing a number of ways to revitalize and increase our club activities and services to its members or its stakeholders. And like most pressing issues of our societies, the solutions to these issues are varied and interconnected. But increasing our new members and retaining them are an important tool toward these improvements. The aging of our current membership, changing fishing opportunities or public attitude on this sport, and generational preferences of leisure-time activities have reduced the numbers of people joining most fly fishing clubs. We need new members to help continue the volunteer activities and

management of these activities since we are a totally volunteer-based organization. Most of our active members are approaching the age where they have begun cutting back their fishing or past volunteer work for the club. New members can help continue the club's volunteer work and provide the appropriate peer support to attract younger members in the future.

Update on the early membership renewal promotional raffle for a new fly rod. Thirty-one members paid their 2015 memberships by August 31 and each of these members has been assigned a raffle ticket for this drawing. The drawing will be held at the upcoming October members meeting on October 8th. The winner does not need to be present to win this prize. Good luck to each of these members.

Bridgeport, the jewel in the crown of DFF's outings

By Gil Parker

For me the Bridgeport outing will always be the finest of our outings hosted by Delta Fly Fishers. Always in the fall and late enough to have the kids back in school. Not that hearing kids play in the campground is a bad thing, because I believe giving the gift of camping is one of the best gifts anyone can do for a child. But in the high country of the Sierra, surrounded by dry sage country, and jagged peaks above the tree line, it seems to represent the very best of the Sierra mountains. Our outing was clouded all summer by how our water shortage would affect the diversity of fishing in this area. And clearly, the rivers and streams were as low as I have

ever seen but holding fish in pockets, the rivers, specifically the east and west Walker, were so low and at such a vulnerable point, that most chose not to test them. Whereas, Robinson creek proved both fun and challenging, particularly for the brother-in-law tandem, John Highsmith and Jason Stapleton. On two separate walks, they figure out what it took to catch Rainbows and Browns, in shallow water and very spooky conditions. Not great numbers but respectable fish, while testing their skills and prowess! The beauty of this, for those that don't know is Robinson Creek runs through our base camp.

Most of our time was spent on the

upper Virginia Lake, nested at 9500 ft elevation, sitting at last edge of the tree line and the beginning of a jagged peak. Close by, are Red and Blue lakes, known for Goldens and Brookies, and really short hikes, surrounded by high country beauty. We fished hard on the upper Virginia, using our Outing host, Don Gillette's own Red Ryder and CJ's recommendation a low Bromberg. Both producing fish with the edge going to the Low Bromberg as being the better of the two. CJ Webb, Carolyn, resident owner of the Virginia Lakes Lodge, and contributor to our newsletter, providing Eastern Sierra fishing updates, a treasure trove of information and a

(Continued on page 5)

They say you forget all your troubles on a trout stream, but that's not quite it. What happens is that you begin to see where your troubles fit into the grand scheme of things and suddenly they are not such a big deal anymore.

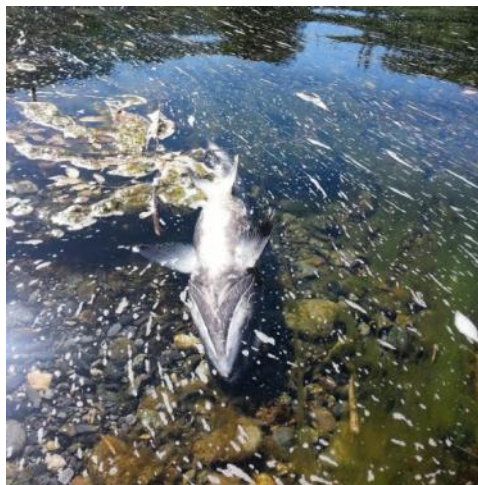
John Gierach

The drought and a potential fish kill

We face a situation on the Klamath Basin that we faced in 2002. Low, warm water flows on the Klamath and Salmon Rivers that have the potential of causing another fish-kill. To gain political favor, then vice-president Dick Cheney withheld water for the salmon run and diverted the water to ranchers and farmers in the Klamath Basin. The resulting low, warm water flow allowed the endemic fungi *Branchiomyces* to flourish and cause gill-rot disease in the salmon. Bush/Cheney claimed only a very small number of salmon were lost. However, the actual number of dead fish was between 68,000-70,000 salmon. That year, the entire salmon run numbered 180,000 fish. The Bush/Cheney decision for political favor cost us the loss of 1/3 of the salmon run.

The Salmon River is a tributary of the Klamath and is one of the last remaining spawning grounds for spring-run chinook salmon. The fish return from the sea to fresh water in the

spring and spawn in October. Environmental scientists of the California Dept. of Fish and Wildlife (CDFW) estimate this year's run to be only 60,000 fish. There are no dams on the Salmon River. With the continuing drought, these fish are dependent water diversions for temperature and flow stability. Since July, about 700 fish were holding in pools that have been warming. In the middle of



July, 54 adult salmon / steelhead and 300-600 juvenile fish were found dead. With the lack of a snow-pack, this year the temperature had already reached 72 degrees Fahrenheit. The salmon stop migrating at this high temperature.

DeltaStrippers.Com

Catch and release fly fishing for stripers and large mouth bass on the San Joaquin Delta



Captain Jerry Neuburger

gneuburger@yahoo.com

www.deltastripers.com

209-327-5993 1/14

On the 15th of September, the US Fish and Wildlife Service examined 20 fish taken on the lower Klamath River. Of those 20 fish, 9 tested positive to Ich parasite and 6 of the 9 had severe infections. Cold, flowing water below 70 degrees is the only way to prevent a repeat of the 2002 disaster. Various sources estimate that in a 100 mile stretch of the two rivers, over 1,000 fish have already died.

In the 1960's, the Bureau of Reclamation (BOR) built an 11 mile tunnel from Trinity Lake to the Sacramento River to ship water to the South San Joaquin Valley farmers for their crops including water-intensive almonds. Now this Trinity Lake water will be used to prevent another fish-kill. On September 16th, the BOR released about 3,400 cubic feet per second (CFS) in the lower Klamath River. This is in conjunction with the current flow of 2,500 cps. They plan to increase the flow for 7 days and feel it will take 35,000-40,000 acre-feet of water to prevent more fish deaths



"Our mission is to provide you with a total Klamath River fishing experience." Isla Blanca, Pesca Maya, Xcalak, Picacho Lodge, Chile, Trinity & Klamath River Steelhead, Yuba, Feather & American River Shad, Club Presentations and Clinics

www.excellentadventures.org

Al Smatsky, Proprietor

619 W. Pine Street, Lodi, CA 95240
(209) 368-9261, (209) 601-0819 cell 1/14

(Continued from page 3)

At a recent rally, Chook Chook Hillman, a native American, is offended that the Trinity's water is moved hundreds of miles south for farms and urban use



rather than for the preservation of the salmon. "It's not our fault the have orchards to water in the desert and it's not the fishes fault either. We shouldn't have to pay for that."

Groundwater pumping and San Joaquin Valley Subsidence

Since the 1920's, San Joaquin Valley farmers have been using

groundwater to irrigate their crops. They still do. But the 84 years of unrestricted over-pumping has causing irreversible damage to the valley. Michelle Sneed, of the USGS, recently gave a report on the massive subsidence of the valley floor caused by the continually over-pumping of groundwater. The area of the valley effected is about 1,200 square miles and is bordered by Mendota, Merced, Madera, and Los Banos. It's between Highways I-5 and 99.

The drafting started in the early 1920's and has continued non-stop to the present day with no restrictions imposed on the farmers. When the California Aqueduct went into service in the 1960's, more surface water became available and less ground water was used. Since the 20's local farmers have been aware that their ground is subsiding- becoming lower and lower. In the drought years of 1976-7, 1987-92, 2007-09, and


2012- to the present, more, deeper, and bigger pumps have been used to extract the groundwater. The valley has subsided more that 30 ft. in some locations. A dramatic picture was taken of local farmer, Joe Poland, standing next to a 30 plus foot power pole. The top of the pole shows where the land was in 1925, the sign next to him was the lands level in 1955. The picture of the land he is standing on was taken in 1977. The location of the picture, Southwest Mendota.

The Dept. of Water Resources (DRW) conducted a GPS study in the area in 2008 and again in 2010. They couldn't believe the results and re-checked their work. The land had fallen over 2 feet. More recent studies show the subsidence in the area confirm the land continues to drop over a foot a year in many locations.

Sneed talked about three reasons to worry about land subsidence. They are infrastructure damage, flood protection, and damage to our natural resources. She talked about four areas of infrastructure that potentially would have catastrophic damage to the valley. These include the California Aqueduct, the Delta Mendota Canal, the east side bypass (for flood control East of the San Joaquin River, and the San Joaquin River itself. Cracks and buckling in cement canals and other structure in the infrastructure are showing up more frequently. Recently, the Mendota Water Authority (MWA) called DRW to tell about gradient-flow

Land Subsidence along the Delta-Mendota Canal and Neighboring Areas in the Northern Part of the San Joaquin Valley, California

Michelle Sneed, Justin Brandt, Mike Solt, Claudia Faunt
California Water Science Center
U.S. Geological Survey
June 9, 2014



USGS
geology mapping world

(Continued from page 4)



problems in their district. Subsidence doesn't occur uniformly. Because negative gradient changes in MWA canals have occurred, a recent opportunity

to add water to the San Luis Reservoir was lost.

The on-going drought is causing panic with the South San Joaquin Valley Corporate Farmers. In some areas in the South valley it take over a year to get a well drilled. These pumps are unrestricted in size and volume. Subsidence is not only going to continue, its going to get much worse. The water lost by subsidence can never be regained. You can begin to understand immense nature of the San Joaquin Valley's subsidence when you understand the 1200 square miles involved is the largest man-made surface alteration on earth.

Ron Forbes

(Continued from page 2)

wonderful person to talk to about fly fishing. You only need to look around the rustic lodge and see who's name is listed under the trophies mounted on the wall, to understand how competent and thoroughly knowledgeable this little 5 ft tall lady is! We are fortunate in our club to have such a good friend.

Well, the leader on upper Virginia has to be long time member, Earl Summers, holding leading numbers on three days on this lake. Earl shared some his supply of low Brombergs, giving me the opportunity to get on the scoreboard. Don Gillette was our host but the camp nucleus for this outing belong in the camp of Earl, Jim Rich, and Larry Schmidt. These three



Gil with his biggest fish of the outing. Earl holding.

amigos, along with lead trouble maker Grady Lee, manage to keep us in laughter and provide a good time for all. For me fishing and camping with these guys made my trip as well fishing with the Professor, my nick name for Harvey Hamlow, he and I fished lower Twin Lake my last day and had success after a pretty slow morning. All of these guys worked at helping me on the lake and in camp, so I want to take this opportunity to thank them.



DFF Officers

President	
Vice President	
John Highsmith	209-369-3251
Secretary	
Karen Keagy	
Treasurer	
Jason Stapleton	209-334-9201
Directors	
Joe Balderston	209-649-0291
Ron Forbes	209-368-5767
Jerry Neuburger	209-369-5752
Larry Schmidt	209-482-8742
Bob Fujimura	209-339-0683
Gil Parker	209 951-7154
Earl Summers	209-957-6756
Jason Stapleton	209-334-9201
Steve VonBerg	209-327-6161

Committees

Bob McMillan Trout Bout	
Steve Cooper	209-956-1032
Catfish Derby (June)	
Earl Summers	209-957-6756
Conservation/NCCFFF	
Ron Forbes	209-368-5767
Education	
Joe Balderston	209-649-0291
Fishing Mentor Program	
Gil Parker	209-951-7154
Membership	
Bob Fujimura	209-339-0683
Outings	
Steve VonBerg, Gil Parker	
Programs	
Al Smatsky	209-368-9261
Bob Sousa	209-368-2683
Property/Historian	
John Highsmith	209-369-3251
Publicity	
Steve VonBerg	209-327-6161
Raffles	
Vacant	
Trout Bout (November)	
Charlie Reames	209-642-6704
Webmaster/Newsletter	
Jerry Neuburger	209-369-5752

Rx Fly Fishing! is the monthly publication of the Delta Fly Fishers, Inc. Delta Fly Fishers, Inc. is a public benefit 501c3 non-profit corporation registered with the California Secretary of State.

Any correspondence regarding this publication should be directed to:
The Delta Fly Fishers Inc.
PO Box 77862

Lower Sac outing update from 9/24-25/14

By Bruce Rollans

Floated the Sacramento River out of Redding 9/24-25. Current flow is 4,700 cfs. Regulators will reduce this to 3,200 cfs 10/1 which is suppose to be lowest they can go. While wading access should be readily available use caution with every step. We landed many large shouldered rainbows to 18 inches with some doubles. Used both bugs and beads; bugs were bead head



mayfly nymphs from size 14 to 18 (most hook ups on the 18) and beads (salmon eggs) Alaska rigged. We used 2 AAA split shot, but 1 may be in order next month. Just moved the indicator up or down depending on depth. Lower water in October will also mean more grass in the water.

Found a very good lodging option to those already mentions in past announcements; The Oxford Suites on Hilltop Drive. Check it out on Internet. Ask for The Fly Shop discount which is 25-30%; e.g., Execute Queen Suite is \$99 + tax with TV in both rooms. There is a complementary hot breakfast buffet plus an evening reception. October they celebrate Octo-

berfest with german style sausages, salad and 2 free German beers. Also have a heated saltwater pool.

If you plan to fish this outing let me know by 10/8 If you want to participate in a no host dinner at Olive Garden Restaurant 10/18 let me know no later than 10/8.



DFF October 2014 Outing: A Drift down the Lower Sac

by Bruce Rollans

This October outing is again to the Lower Sacramento River in the Redding area, Saturday, October 18 and Sunday, October 19, 2014. Some general information follows.

Typically, the most effective way to fish this river between Redding and Red Bluff has been from a drift boat using egg and bug patterns weighted beneath an indicator. If you want to float the river I recommend using a guide.

The source of most drift boat guides is The Fly Shop at 4140 Churn Creek Road, Redding, (530) 222-3555, The current rate is \$400 per full day for one or two persons, including lunch, water and flies.

If you want to walk and wade the river I recommend you read a good description of wadeable waters from

Keswick Reservoir to Red Bluff by Bob Madgic that has appeared in the California Fly Fisher. I have copies available at your request.



Click on the photo for a great video of fishing the lower Sac

There are a variety of motels available for overnight lodging mostly in or near Redding. Sallye and I have used the following: Best Western Plus Hilltop (530) 221-6100, Best Western Plus Twin View Inn and Suites (530) 241-5500, Hampton Inn

and Suites (530) 224-1001 and Holiday Inn (530) 221-7500. If you have access to AAA Tour Book for Northern California, there are a number of other locations. The internet is another source of lodging options.

If you plan to be there the evening of Saturday, October 18 I will make group reservations for dinner, probably at the Olive Garden. Just let me know so I can get an accurate count for the reservation.

I will do my best to give you updates on water conditions. Sallye and I will be floating the river out of Redding September 24 and 35 then again October 17 and 18. Email me at

mbrsmr36@gmail.com or call my landline, (209) 274-0448. For those who let me know they will be making this outing I will provide cell phone numbers that will in service starting October 16.

Just Another Day on the Delta

By Bruce Rollans

took Sallye fishing with Mike Costello today, 9/29/14. Should have known better. Started out on Little Potato Slough about 10 minutes from Tower Park Marina. Tried three places about 10 minutes each then took a drive West just upriver from the Antioch bridge about 1/4 mile below the mouth of three mile slough. I quickly landed three stripers between 4 and 5 pounds. Things were looking good. We move further west to fish several braids off Sherman Lake. The tide was almost out and things start

looking down. Sallye became a catching machine. By noon the tide was flat and we had 22 stripers to the boat; my count was seven. Lunch was time for my emotional recovery. We moved back out into the San Joaquin River, East of Antioch bridge to fish over several grass flats in 4 to 10 feet of water with the tide incoming, but not much. We hit the jackpot. Ended up here about 4 p.m. with 51 stripers to the boat; 22 legal and 12 between 5 and 7 pounds. I did have 10 of the legal stripers. Tried one more spot and Sallye hooked a

dog which turned out to be a Sacramento Pike Minnow. Helping make our day was seeing a huge beaver dam and an otter slide both near Sherman Lake. Heading back to Tower Park on the Moke, we came across a rare sight for us. A large sea lion had caught a less large salmon and was thrashing around to tear it into smaller pieces. About four sea gulls were trying their hardest to get in on the action, but that sea lion just spooked them with an evil look.

Mokelumne Clean Up Report

Saturday, September 20., 2014 large groups of people participated in a multi site clean up of the Mokelumne River. One group worked the river between Highway 49 and Electra Power

Plant, another of about 400 did the shore line of South Camanche and the third group worked the river between Camanche Dam and Mackville Road bridge. Bruce and Sallye Rollans represented DFF at this third site with over 50

others. Amazing how many people plant empty beer cans in the ground as though they are going to grow more beer. We had a great lunch including Lockford Dakota Bratwurst sandwiches.

More Bridgeport Photos

By Jim Rich



Eastern Sierra Focus

By CJ Webb

Fishing Tip:

Fall is a great time to test out your terrestrial tactics with small flying ants, or ground ants. Winds catch many of these ants and carry them along until they fall into the water. Mating swarms usually occur high above the ground and usually out of sight and when the cycle is complete the queen returns to land, loses her wings and the worker ants begin their duty. On Occasion this event occurs close to or over the water and large numbers of ants often fall on the surface where trout turn into picky feeders. Trout will often feed on ants without you noticing and you will have to locate an ant and try and mimic it in order to get the right proportion as to how the ants sits in the water. Floating ants collect in foam lines, off shorelines with high banks and in wind-sheltered areas. The unique thing about ants is their acrid taste that puts them on the trout menu. Carrying a small pair of binoculars in your vest or in a pocket on your float tube would be a great advantage in locating ants after the mating swarms as they are hard to spot.

Fishing News and Updates:

Mono County Trophy program will continue into spring of 2015 for the current contract with Desert Springs Trout Farm in Oregon.

Mono County's primary focus is to complete the conservation easement which is anticipated to be completed within the next couple months, and then hopefully the Board of Supervisors will have a direction as to the aquaculture operation on Conway Ranch. There are additional considerations in getting the facility up and running again as to replacing the raceway liners, an Ag-well for emergency water, DFW required screens and what type of operator they Board wants to attract; many decisions which will be costly for the someone. Note: Just received the draft Conservation Easement Management Plan (12 pages), and Final Conservation Easement; (52 pages), great bedtime reading.

Still nothing current on the big news on the Department of Fish and Wildlife's request to simplify regulations and if it will fly in 2016. Currently it is being researched at the Department level and it will go to businesses and public discussion at a later date.

Updates will be reported through the winter if necessary.

DFW asks trout anglers to be mindful about fishing in the state's waters and the effects their catch can have on the populations. The effects of the current drought continue to mount especially since aquatic wildlife is more vulnerable as stream flow's decrease and instream water temps increase adding to the stress level of trout. Fishing streams early morning and late evening when the air cools the water is a better choice for the resource and will reduce the mortality of catch and released trout.

Charles Jardine Author, illustrator, expert caster among many other achievements, has won the Arthur Oglesby lifetime achievement award at the CLA Game Fair in the UK. Game Fair head Chris Osborne said "Throughout his life, Charles has been a figure of respect. He is a true angling guru, as well as being arguably the best fly caster I've ever seen. His demonstrations have delighted crowds at Game Fairs for two generations as he is an entertainer as well as a spectacularly good fisherman. Beyond that, he cares deeply about the future of our sport and his current work with Fishing for Schools is exemplary. The angling world salutes a genuine master."

So. Cal Edison and the Inyo National Forest announced that Tioga Lake, located in upper Lee Vining Canyon, will be drained one month earlier this year to allow placement of a geo-membrane liner on both the main and auxiliary dams. This liner helps prevent current and future leaks in the dams. SCE operates the Tioga Lake dams as part of their Lee Vining hydroelectric system.

ESFGA is still in the middle of negotiations with DFW (CA Fish & Wildlife) and DWP (LA Dept. of Water & Power) on the outhouses along the East Walker and for the disabled fishing access. I'll report on any future progress.

Weather – The psyche evaluation on Mother Nature came back negative, but it determined that she was nature reared in the month of January meaning she is a "Sky Pilot" literally. To see one in person you would have to be at #70 switchback on the way up the 99 switchbacks on the Mt. Whitney trail. It is incredibly beautiful and ranges in shade from white into violet. My experience in hiring staff for 41 years is based on never hire females born in Janu-

ary. They are lovely, delightful, whimsical, fun-loving, inclined to the dramatic and EXTREMELY forgetful.

Fishing Report:

Remember to check the regulations prior to fishing unfamiliar water as to limits, size, and gear.

ROCK CREEK flows are stable at 30cfs as of 9/21 and creek is clear. Conditions and hatches have been good. Hike in to Chickenfoot or Long lake and fish the inlet/outlet for some enjoyable action. Stream is low and very clear so stay away from the edge or you'll be just exercising your arm. Ruby Lake up the trail toward the west is doing ok with dries so try black fur ants or very small hoppers. Dries working are Para-Adams #6-18, BWO (very thin body) #16-18, elk hair caddis #18, parachute kicking hoppers, Fat Albert and large foam ants. Nymphs working: Crystal hunchback baetis #18-22, Tungsten Psycho midge #18-20, Split Wing-case BWO #16-20, Zebra midges #18-20, pheasant tails 18-22 and Hare's Ear #16-18.

HOT CREEK flow is at 12cfs and clear. Weeds are still a serious problem making long drifts impossible. Focus on making short perfect drifts in-between the weeds and whatever clear or deeper water you can reach. Fishing is good but landing fish you hook is difficult, especially if they have any size. Using heavier tippet might assist lifting their heads up and over the weeds. Streamers - still no dice! Dries working are extended body blue winged olive (BWO) 18-22, CDC Caddis 18-22, Hot Creek caddis 18-20, Parachute Caddis 18-20, Parachute Adams 16-20, and Elk Hair Caddis 16-20. Nymphs: Fox's Caddis Poopah in olive size 20, Nori's Caddis pupa olive #20, Anderson's Bird of Prey in Olive size #18, buckskin caddis #20, and Hogan's S&M Nymph size 20. Also try some Zebra midges 18-22, WD-40 18-22, Micro Mayfly 18-22 and Scuds 14-16. Please stay out of the water to help prevent the spread of New Zealand mud snails.

CROWLEY LAKE is still going down a few more inches than last week and sitting at 6757 feet and the islands are getting very close to popping out near the marina. Water temperature has dropped from 68° to 62° on the bottom uniformly around the lake. Water is almost crystal clear with zero algae. Weeds across the lake are dying leaving single stalks for the fish to work. Fish

(Continued on page 9)

(Continued from page 8)

have congregated in the Norm Arm and greeted by the "Michelin" rubber-boys and 14' metals and has been wide open for midging and stripping. Trifectas are fairly common with reports of cutthroats holding in the north end. McGee Bay and Hilton are on and off without pressure. Looking for predators search the weed stalks or weed line and you might get lucky. Red/black Optimidge or Albino Baron early then swap the Albino for copper Tiger as the sun hits high in the sky. Also try Olive Optimidge #18 or Shaft's emerger midday. Big fish rarely go for the flashy colors in crystal clear water. Stripping has picked up for the tubers so try a stillwater hare's ear or trail a small PT behind a perch fry, Hornberg's, perfection perch and punk perch. Be sure and twitch it slowly the last 10-15 feet just like a midge or ascending Callibaetis

UPPER OWENS flows are at 50cfs above the Hot Creek Confluence (9/21), and clear but off colored below. The lower you go the more "green slime" you'll have to contend with. It's bad down in the bait section and below and almost non-existent up above the bridge. Still waiting on the bigger fish to move up. Catching mostly planters from the bridge down, some resident fish higher up, but more spread out. Nymphing under the indicator or stripping with a sink tip is the best way. Top water flies: EC Caddis 16-20, Elk Hair caddis 16-18, Stimulator 14-18. Nymphs: Copper Johns 14-18, Prince nymph 14-18, Hare's Ear 14-18, flashback PT #16, Zebra Midges 18-20, Anderson's Bird of Prey olive #16, red San Juan Worms 12, Nori's Caddis Pupa Green, and black bead bird's nest #14. Streamers working are Perfection Perch, and red or wine leeches, and black cone-head wooly buggers. Dries: EC Caddis 16-20, Elk Hair Caddis 16-18, Parachute Adams, and Stimulator 14-18.

CONVICT LAKE was stocked with DFW bows again, and fishing should be wide open. Dry Flies: Adams, Female Adams, EC Caddis, Elk Hair Caddis, Stimulators, and Hoppers. Streamers: Wooly Bugger (black, brown, olive, or green), Mutukas (black, brown, olive, or green), Hornbergs, and Muddler Minnows. Wet Flies (Nymphs): Prince Nymph, Flashback Pheasant Tail, Hare's Ear, Zebra Midge (red and black), Copper John (red and copper) and San Juan Worm (brown or red), and a brown Marvel fly. **MAMMOTH BASIN** - Basically the same as last month's report. Water is clear and cool with temps in the high 40's at night. Fish a full sink line and make sure you are getting it down there. Also try fishing under an indicator or try some dries late in the evening. Flies work-

ing are Griffith Gnat 16-22, Parachute Adams 16-20, Stimulator and Yellow Humpty #16-18. Nymphs working are Zebra midges 18-22, tan/olive Bird's nests 14-16, Pheasant tails, Hare's Ear, Callibaetis and copper zebras. Streamers working are olive and black Twin Lakes Specials 10-12, olive and black wooly buggers 10-12 and Flashabou buggers in black.

SAN JOAQUIN - Water is clear and flows are slightly up at 10cfs. Fishing conditions and hatches are poor. Only more rain/snow will bring the river back to good condition. Look for pools as it is probably the only choice where fish will be holding. Dries to try are parachute Adams #14-16, Yellow humpty #14-16, stimulator, Elk Hair Caddis, Chernobyl Mini all sizes 12-14, and Fat Albert size 14. Nymphs to try are chartreuse Copper John #14-16, Pheasant Tail #14-16, Prince Nymph #14-16, and Hogan's S&M nymph #14-16.

JUNE LAKE LOOP reports that Silver Lake has been great regardless of the wind and fire near the Village. DFW stocked it's weekly 800 pounds of catchable rainbows and still pulling in "Bows" in the 3 pound plus range. Fish are hanging in deeper water but as fall begins they will be working up towards the surface over the next few weeks. Try some black or green Matuka's, rainbow Hornberg's, Loeberg's and a few Punk Perch for some fun action. The weather is slated to be on the warm side for this week with cooling and possible dusting over the weekend. Dries will be working so try large ants, hoppers, stimulators along the weedy areas of the shoreline. Nymphs that saw action were Prince, Zebra, Copper John, Flashback Pheasant Tail and red or brown San Juan worm. Try your own personal favorites, as it's that time of year and anything goes.

GULL LAKE - is fishing similar to June, fish the weeds and watch for rising trout. Terrestrials and anything that comes off the bushes and weeds will get hits. Damsels, Dragonflies, ants and hoppers should show good results.

SILVER LAKE - has been fishing well regardless of the fire, and DFW dumped in it's weekly tally of 800 pounds of catchable rainbows. Streamers that have been working very well are Black or Green Matuka's, rainbow Hornbergs and the grey ghost. Give them all a shot, even Burgundy and silver ghosts. Fall colors are getting close to spectacular, so come on up and drive through the loop.

RUSH CREEK flows above Grant Lake are at 11fs and 34cfs below as of 9/21. Try an Elk Hair Caddis #14-18 or Stimulator 14

-18. Nymphs: Copper Johns 14-18, Prince nymphs 14-18, Micro Mayfly 16-20, Micro Stone 10-16, Zebra Midge 18-20, PT 14-20, Tan Bird of Prey and Hare's ear 14-19. Streamers working are BH Carey Bugger, Sounded Sculpin, Crystal Bugger, Rickard's emerging bugger, Matuka, and BH Pop's Bugger

GRANT LAKE - Water is still cold and clear, and a little down from last month but with good reports on fishing. DFW continues to stock every other week as the rest of the Sierra but fishing was good throughout the month and if you want a current report check with the marina or Ernie's Tackle in the Village.

LUNDY LAKE - The Lake is down and dropping in small increments which won't affect the fishing. The resort closed on the 15th but are still getting an every other week plant. So fish it like you would the June loop and with the same flies.

VIRGINIA LAKES - Sunrise 6:463am-- Sunset 6:47pm as of the 16th. DFW stocked 500 pounds of catchable Rainbows last Wednesday and on an every other week schedule. Best fly for the last couple weeks is still the "Dirty Doc" size 10-12, it's a real catcher and everyone is having fun. Also try the Virginia Lakes Special, danger midges, copper head midges, hare's ear and olive bird's nests are working depending on the air temperature. Dries working in the early morning if there's a good ripple so try a black caddis or EC Caddis emerger size 16. Nice Caddis hatch for the last few days prior to the wind on Thursday over by the inlet, lots of fun. Delta Fly Fishers ascended upon the Lakes last week with a vengeance and fun was had by all. Waiting to see their report on their catching. I know what they had for breakfast but not sure what flies they got serious fish on. Hmmm!

EAST WALKER flow as of this writing was 22cfs and fishing is better below the bridge and into Nevada. The wind died around 11pm Thursday night and the nights are colder and days are very nice. We all are hoping the winter weather pattern changes in order to recharge the river. My thoughts are not to fish the miracle mile and as I am concerned about the water temperature. If you feel you need to fish here, remember the water is very low and if you hook into something substantial take care in releasing and save the resource. Be sure and call Ken's at 932.7707 and get the latest report, things change rapidly with low warm water.

BRIDGEPORT RESERVOIR is very low

(Continued on page 10)

Rx Fly Fishing! Advertising Rates

2 column inches each newsletter issue for the year for \$400, six months \$200, quarter \$100, one month \$40. The ad may include artwork and will link to the advertiser's website.

Additional column inches of ad space may be purchased at \$200 for the year, \$100 for six months, \$50 for a quarter year, \$20 per month.

Included:

A similar ad on our website monthly articles equal to the number of newsletter advertising months. (App. Two per month.)

A digital subscription to the club's monthly newsletter.

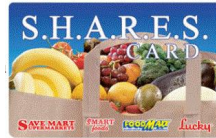
Permission to post specials and other advertising on the club's Face book page, 2 per month.

For additional information please phone or e-mail [Jerry Neuburger](mailto:Jerry.Neuburger), Editor 209-369-5752

SAVE MART SUPERMARKETS

Higher produce standards
than the USDA.
Fresh comes first

The Delta Fly Fishers are proud to participate in the Save Mart Shares program. Each swipe of your Shares card earns the Delta Fly Fishers 3% of your purchase.



Ask John Keagy for a Shares Card today.

Save Mart Store Locator

1/15



CABINS • RESTAURANT • LODGE • TACKLE

Elevation 9770' Established 1923

The Heart of the High Sierra
Humboldt-Toiyabe National Forest

Fishing, Hiking, Camping, Cabins, Restaurant, Lodge

<http://www.virginialakesresort.com>

HC 62 BOX 1065,
BRIDGEPORT CA 93517-9602
760-647-6484 Tel/Fax 1/14

RIO products

Available at all quality fly shops 7/14

(Continued from page 9)

and the deeper water is the only spot for hooking up. Try Callibaetis by the inlets and zebra midges, shaft emerger, No Name damsel #12, olive Bird's Nest, Jensen's Callibaetis, and Rickards AP emerger 12-16, and BH Sparkle Ex-leech 10-12. Streamers working are Hornbergs #6-10, Twin Lakes special size 12, Matuka's 10-12, olive and

brown buggers, Hale Bopp Leech 10-12 and Punk Perch 10-14. Don't forget to call Ken's and talk to Rick or Jim for the best flies for the day, as conditions and water change constantly and they will put you onto the right fly.

WEST WALKER flow is 28cfs. Water is low and my recommendation is to try the

flat water near the bridge down to Chris Flat, also try below the first bridge as you enter Walker. It is warmer so try some foam attractors over Bird's nest, pheasant tail or San Juan worms. It had been fishing well prior to the wind so check with the locals to see what is working the best.

See you on the water! CJ 14.9

Rx Flyfishing!

Delta Fly Fishers, Inc.

P. O. Box 77862
Stockton, CA 95207-7862
www.deltaflyfishers.com